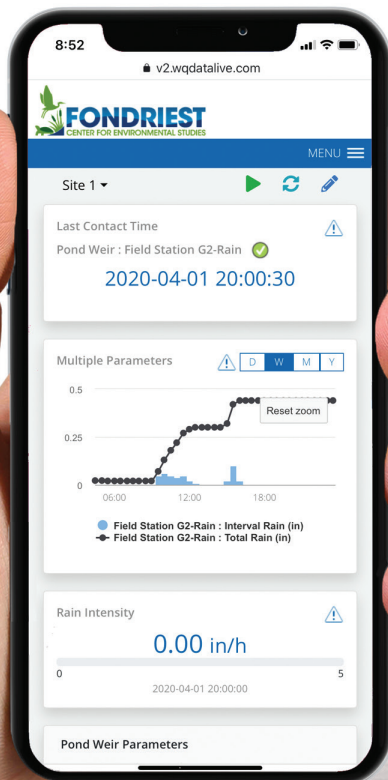


# WQData LIVE

WEB DATACENTER

- 24/7 instant access to project data
- 2-way communication with remote systems
- Secure, password-protected site
- Interactive ESRI Leaflet map interface
- View & download tabular and graphical data



**WQData LIVE** is a web-based project management service that allows users 24/7 instant access to data collected from remote telemetry systems. Users with NexSens G2, X2 and V2 platforms have the ability to configure and update systems remotely via Wi-Fi, Ethernet, cellular or satellite telemetry. All projects are password-protected with multi-level access. Administrators have full access for remote communication and project modification, while collaborators are limited to viewing and exporting data.

The online database offers the ability to view live readings, configure alerts to notify project personnel when data values exceed threshold limits, export data and more. The project dashboard includes an ESRI Leaflet map view showing all project sites on a map with zoom, scroll and drag capability. The bottom of the dashboard includes a project overview, data disclaimer and project photo. For projects with multiple locations, each site within a project shows the data loggers connected along with a site photo in a convenient viewing pane.

Clicking on any site within a project displays the most recent data values alongside a graph depicting a day, week, month or year of data. Within each parameter, users can register to receive alerts via email based on a high or low threshold. A rich set of meta data and diagnostic data specific to each site is displayed at the bottom for troubleshooting sensor or data logger issues. With this rich set of tools, **WQData LIVE** simplifies the task of managing an environmental monitoring project.

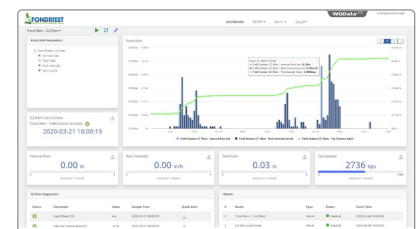
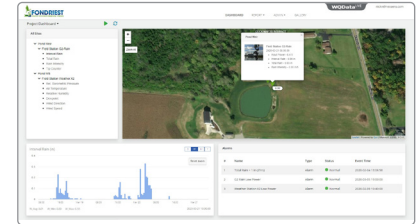
# WQData LIVE

## WEB DATACENTER

### plans

	Basic	Advanced	Professional	Enterprise
Secure Cloud	✓	✓	✓	✓
Interactive Map	✓	✓	✓	✓
Multi-Level Users	✓	✓	✓	✓
Remote Configuration	✓	✓	✓	✓
Dashboards	✓	✓	✓	✓
Graph, Statistics, Tables	✓	✓	✓	✓
Reports	✓	✓	✓	✓
Quick Alerts	✓	✓	✓	✓
API		✓	✓	✓
Data Export Tool		✓	✓	✓
Alarms		✓	✓	✓
Webcam Support			✓	✓
Calculated Parameters			✓	✓
Public Portal			✓	✓
Photo and Video Storage		1GB	10GB	50GB
Data Storage	1-Year	Unlimited	Unlimited	Unlimited
Monthly Price Per Project	Free	Call	Call	Call*
Annual Price Per Project	Free	Call	Call	Call*

\*Unlimited Professional projects available with Enterprise



Name	Location	Description
...	...	...
...	...	...
...	...	...

### parts list

Part #	Description
WQData-A-M	WQData LIVE Advanced web datacenter service, priced per month
WQData-A-Y	WQData LIVE Advanced web datacenter service, priced per year
WQData-P-M	WQData LIVE Professional web datacenter service, priced per month
WQData-P-Y	WQData LIVE Professional web datacenter service, priced per year
WQData-E-M	WQData LIVE Enterprise web datacenter service, priced per month
WQData-E-Y	WQData LIVE Enterprise web datacenter service, priced per year



tel: **937.426.2703**  
8am to 7pm EST, Monday-Friday

fax: **937.426.1125**

NexSens Technology, Inc.  
2091 Exchange Court  
Fairborn, OH 45324  
info@nexsens.com

[nexsens.com](http://nexsens.com)