

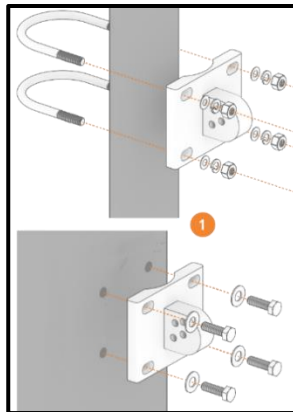
NexSens SP-Series Solar Power Pack Quick Start Guide

The SP-Series Solar Power Packs feature a solar panel, regulator, and battery housed in a weather tight enclosure. Solar Power Packs are used to provide continuous power for X2 and V2 systems.

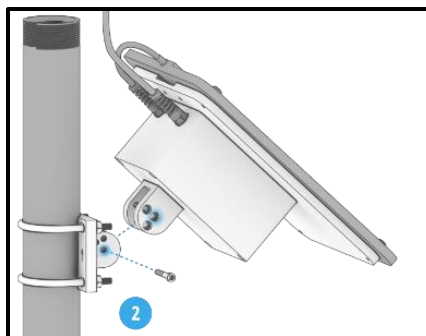


Installation

- 1 Install the mounting bracket onto a 1-1/2" to 2" pole using the included U-Bolt hardware or attach the bracket to a panel as shown.
 - a. Ensure the arrow on the back of the bracket is pointing up.

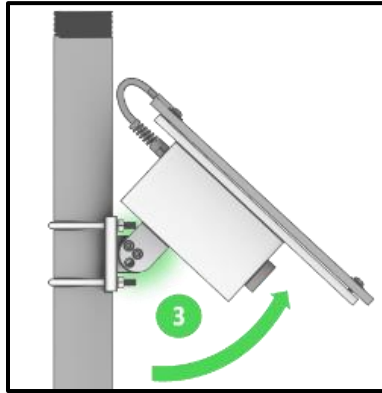


- 2 Install the solar panel onto the mounting bracket by inserting one of the included 1/4-20 x 1-1/2" screws through the center hole of both pieces and tightening with a 3/16 hex driver.

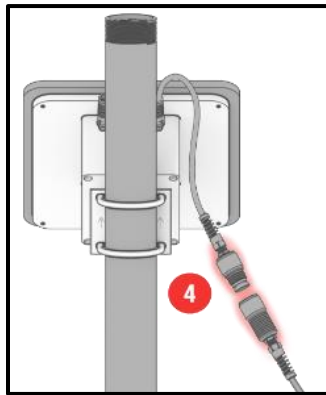


NexSens SP-Series Solar Power Pack Quick Start Guide

- 3** Tilt the panel to the desired angle (30° or 45°) and lock into place by inserting the second included ¼-20 x 1-½” screw through both parts and tightening.



- 4** Connect the UW-6 plug on the Solar Power Pack to the device to supply power.



Wiring



UW-6 Plug Pin-out

UW6 Pin	Wire Color	Signal
1	Red/White	PWR +
2	--	--
3	Black/Yellow	PWR -
4	--	--
5	--	--
6	--	--