

# NexSens SP35 Solar Panel Kit

## Quick Start Guide

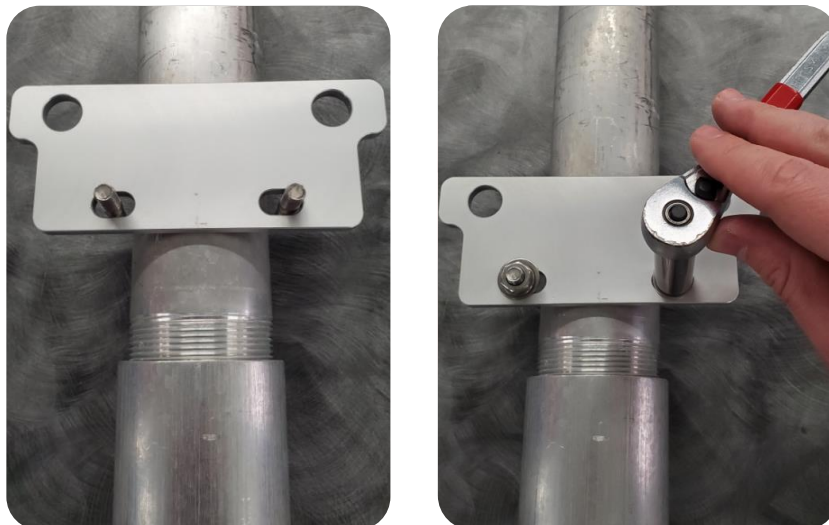
The NexSens 35-watt solar panel kit includes a semi-flexible solar panel and a 17A-Hr battery enclosure with integrated solar regulator. Both include hardware for field installation on a buried 2" NPT pipe.

### Battery Box Mounting

- 1 Set the battery enclosure on its face and place one of the included mounting braces on top of the battery box.
  - a. Secure the brace to the box using the included washers and Phillips screws. Tighten thoroughly using a screwdriver.



- 2 Affix the other brace to the 2" NPT deployment pipe or MAST accessory using one of the included U-bolts.
  - a. Place the included washer, lock-washer, and nut atop the U-bolt threads and evenly tighten the brace to the pipe using a 1/2" socket.

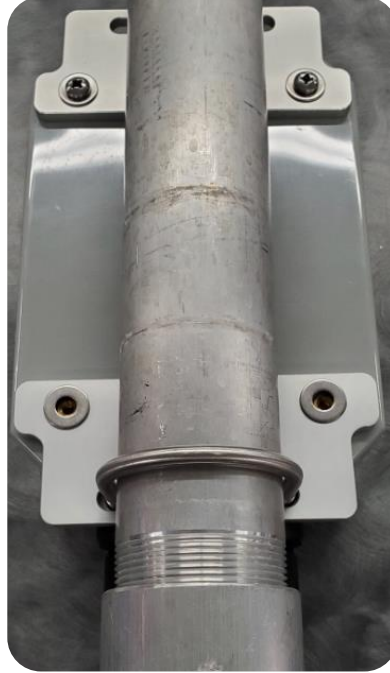


1

# NexSens SP35 Solar Panel Kit

## Quick Start Guide

- 3 Align the lower back of the battery box with the pipe-mounted brace. Secure the lower brace to the box using the included washers and Phillips screws.



- 4 Run the last U-bolt around the pipe and back through the top brace. Secure it in place using the remaining washers, lock-washers, and nuts. Tighten evenly using a 1/2" socket.



# NexSens SP35 Solar Panel Kit

## Quick Start Guide

### Solar Panel Mounting

- 5 Loosen the two U-bolts pre-installed on the solar panel mount and slide the panel onto the pipe.
  - a. Alternatively the U-bolts can be removed and threaded around the pipe (if it is not feasible to slide the panel down from the top).



- 6 Adjust the mounting height of the panel as desired, then use a 1/2" socket to fully and evenly tighten the two solar panel bracket U-bolts to the pipe.



# NexSens SP35 Solar Panel Kit

## Quick Start Guide

- 7 [Optional]- Loosen the two hinge bolts to adjust the solar panel tilt as desired. Re-tighten using a 9/16" socket once completed.



### Cable Connections

Note that both battery box ports, and their respective solar panel and power cables are keyed to prevent misconnections.

- 8 Connect the black cable leading from the solar panel to the 'SOLAR IN' port on the battery box and turn the cable connector bushing clockwise to secure.
- 9 Connect the included orange UW6-2W to the 'PWR OUT' port on the battery box. The free-end of the UW6-2W cable connects to the 6-pin port of an X2 or iSIC-V2 series data logger to supply system power.

