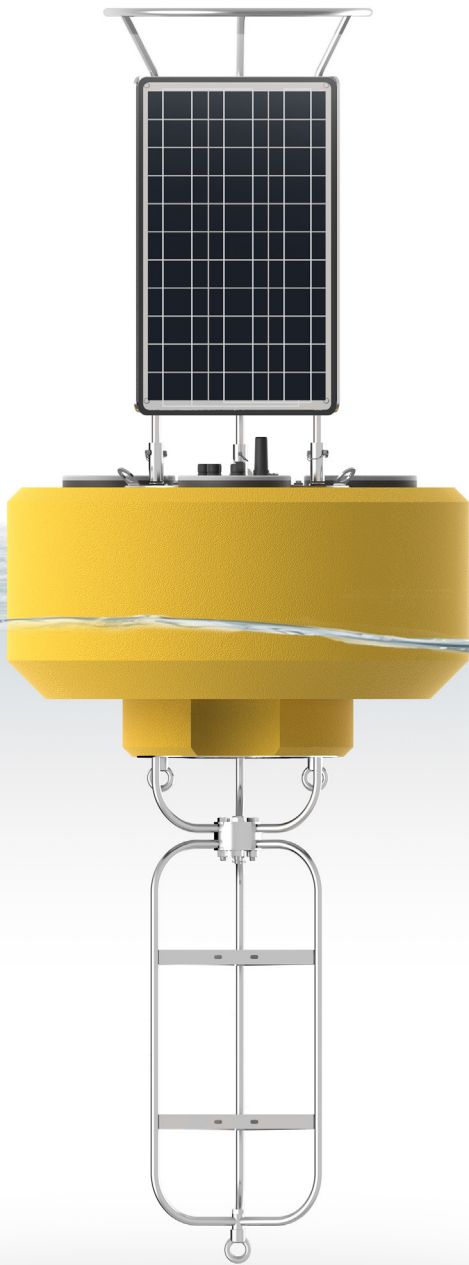


CB-1250

DATA BUOY

- Self-powered data logging buoy
- 4G LTE cellular or Iridium satellite telemetry
- Supports a variety of environmental sensors
- Accommodates most environmental data loggers
- Rugged polymer-coated foam hull



The NexSens **CB-1250** Data Buoy is designed for deployment in lakes, rivers, coastal waters, harbors, estuaries and other freshwater or marine environments. The floating platform supports both topside and subsurface environmental monitoring sensors including weather stations, wave sensors, thermistor strings, multi-parameter sondes, Doppler current profilers and other monitoring instruments.

The buoy is constructed of an inner core of cross-linked polyethylene foam with a tough polyurea skin. A topside 46" tall stainless steel tower includes three 71-watt 12VDC semi-flexible solar panels, and a center 10" ID x 27.5" tall data well accommodates batteries, data loggers, sensors, and more. Three 8" pass-through holes with female NPT bottom threads allow for quick connection of instrument deployment pipes and custom sensor mounts. The stainless steel frame supports both single point and multi-point moorings.

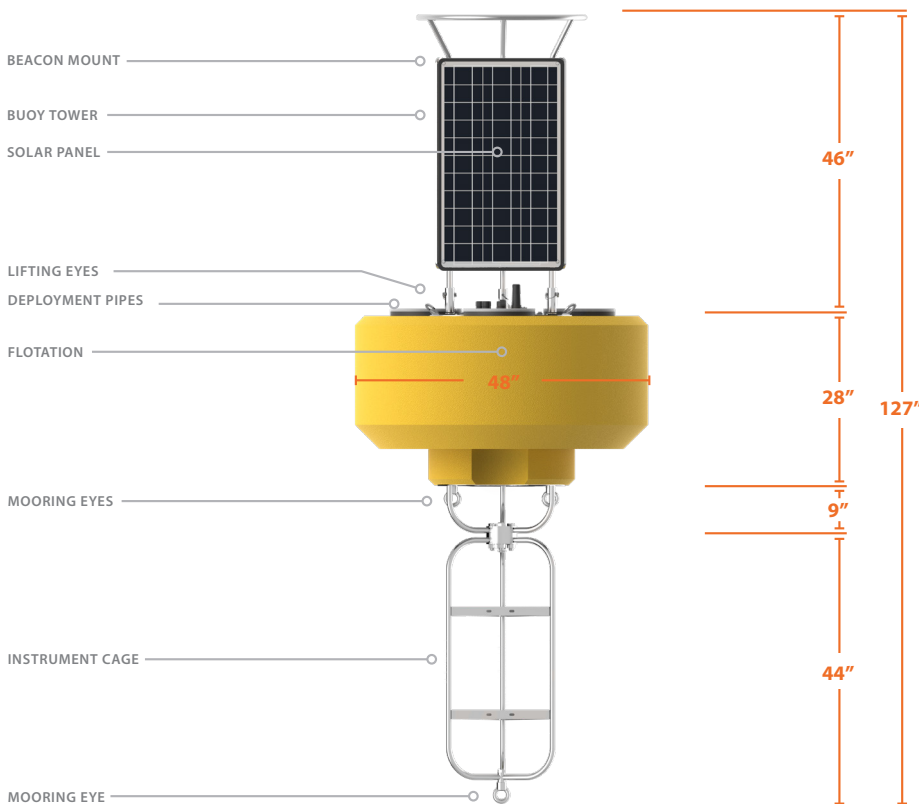
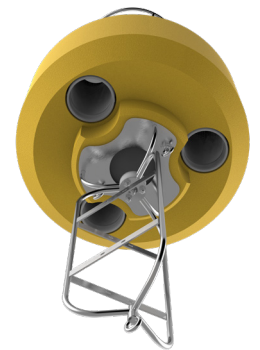
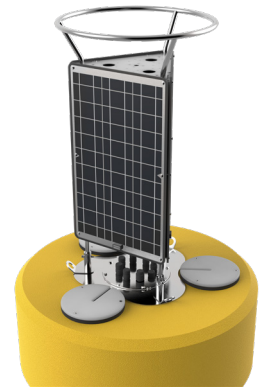
The **CB-1250** Data Buoy is optimized for use with NexSens **X3** data loggers. Wireless telemetry options include global 4G LTE cellular, Iridium satellite, and global 4G LTE cellular with Iridium satellite fallback. Compatible digital sensor interfaces include RS-232, RS-485 and SDI-12. Each sensor port offers a UW receptacle connector with double O-ring seal for a reliable waterproof connection. For custom integrations, **CB-PTL** pass through and **CB-MCL** wet-mate data well lids are available.

CB-1250

DATA BUOY

specifications

Hull Outer Diameter	48.0" (121.9cm)
Hull Height	28.0" (71.1cm)
Data Well Inner Diameter	10.3" (26.2cm)
Data Well Height	27.5" (69.9cm)
Pass-Through Hole Diameter	8.0" (20.3cm)
Tower Height	46.0" (116.8cm)
Solar Panels	3x 71-watts
Weight	300 lb (136kg)
Gross Buoyancy	1250 lb (567kg)
Hull Material	Cross-linked polyethylene foam with polyurea coating & stainless steel deck
Hardware Material	316 stainless steel
Mooring Attachments	3x 3/4" eyenuts



parts list

Part #	Description
CB-1250	Data buoy with polymer-coated foam hull & (3) 71-watt solar panels, 1250 lb. buoyancy
CB-A05-1	CB-Series buoy battery harness with integrated solar regulator & (1) 28 A-Hr battery
CB-A05-2	CB-Series buoy battery harness with integrated solar regulator & (2) 28 A-Hr batteries
CB-A05-3	CB-Series buoy battery harness with integrated solar regulator & (3) 28 A-Hr batteries
CB-A05-4	CB-Series buoy battery harness with integrated solar regulator & (4) 28 A-Hr batteries
CB-X3L	CB-Series buoy data well lid for X3 data logger integration
CB-PTL	CB-Series buoy pass through data well lid for custom integrations, includes set of plugs & cable gland fittings
CB-MCL	CB-Series buoy wet-mate data well lid for custom integrations, includes solar connector pigtail & pressure relief valve (MCBH connectors sold separately)



tel: **937.426.2703**
8am to 7pm EST, Monday-Friday

fax: **937.426.1125**

NexSens Technology, Inc.
2091 Exchange Court
Fairborn, OH 45324
info@nexsens.com

nexsens.com