

BAL25 CB-Series Buoy Ballast Weight Quick Start Guide

The BAL25 stainless steel ballast weight can be added to any CB-Series Data Buoy frame or instrument cage to provide additional counter-balance for deployment.



Installation

- 1 Remove the nut and lock-washer from the end of the BAL25 and run the threaded rod assembly through the bottom of the instrument cage.



- 2 Add the lock-washer and nut to the end of the threaded rod.



BAL25 CB-Series Buoy Ballast Weight Quick Start Guide

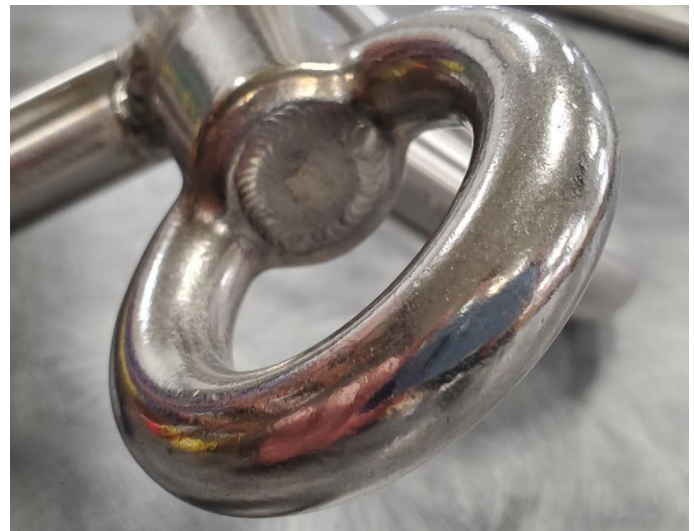
- 3 Tighten the nut onto the threaded rod using a large adjustable wrench. Use a second wrench to hold the eye nut and prevent it from spinning or loosening (if un-welded).



- 4 The BAL25 may ship without welded components to allow users greater flexibility for installing and applying the ballast weight to their buoy system. It is **highly recommended** that both the eye nut and locknut of the BAL25 assembly be welded prior to buoy deployment.



Un-welded eye nut



Welded eye nut