

iSIC-OEM Quick Start Guide

This guide will help you get started. Detailed instructions are available in the NexSens iSIC-OEM manual.

Overview

The NexSens iSIC-OEM (Intelligent Sensor Interface and Control) is a direct connect iSIC data logger. It is designed specifically for environmental monitoring applications and can be used in conjunction with other data loggers. The iSIC-OEM features a dedicated port for continuous direct RS-232 communication.



What's Included

- iSIC-OEM Data Logger
- (2) Mounting flanges
- iSIC Kit includes
 - (2) Gland Fittings
 - (5) Desiccant Packs
 - RS-232 Interface Cable
 - iSIC Resistor Pack

Field Installation

1. Mount the data logger to a wall, pole, or other secure location above flood stage using the mounting flanges supplied.
2. Connect the A38 grounding kit wire to the copper lug on the outside bottom panel of the iSIC-OEM data logger and the other end to an appropriate earth ground.
3. Connect sensors to the data logger. See the sensor interface manuals for wiring and other details. Bring any cables into the enclosure by removing a port plug and installing a gland fitting from the iSIC kit.
4. Physical connections can be made in one of two ways:
 - To set up a direct-to-PC connection, attach the A66 RS-232 interface cable to the data logger and plug the DB-9 connector into an available PC COM port.
 - To connect the data logger to another device, first attach the A60-OEM cable to the data logger. Then, simply wire the orange and yellow leads of the cable to the RS-232

data out and data in terminals on the second device, respectively.

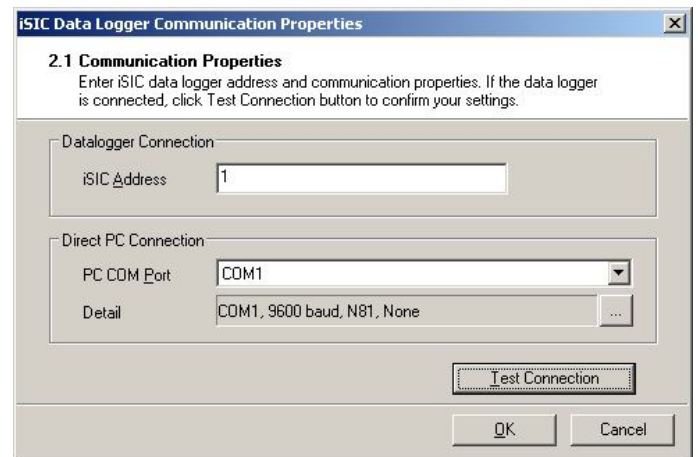
5. Power can be supplied to the iSIC-OEM in one of two ways:
 - Power the direct-to-PC connection using the A10 12V power supply. Plug the adapter into the power jack connector on the cable, and then plug the 12V supply into any standard wall outlet.
 - Using the A60-OEM cable, wire red and black to an external 12V power source.

Note: Observe the green blinking LED in the hole at the end of the analog terminal strip. This only blinks for 15-20 seconds during warm-up to confirm that the data logger is powered and ready.

Configuring with iChart

1. Install iChart software on a Windows computer.
2. Ensure power is supplied to the data logger.
3. Add the Direct Connect iSIC to an iChart project file.

To accomplish this: Follow the Setup Device Wizard to add a site name, and then select **iSIC** from the list of NexSens data loggers. Specify the correct PC Com Port and iSIC Address. Click **Test Connection** to check communication.



4. Add sensors in iChart by selecting the manufacturer and model number.
5. Continue the Setup Device Wizard and click **Program iSIC** to conclude configuration.

For more information see the online manual www.nexsens.com/pdf/nexsens_isic_manual.pdf



1328 Parkway Court
Beavercreek, Ohio 45432
937-426-2703
www.NexSens.com