

Direct Connect iSIC Quick Start Guide

This guide will help you get started. Detailed instructions are available in the NexSens iSIC manual.

Overview

The NexSens iSIC (Intelligent Sensor Interface and Control) data logger uses a dedicated serial communication port for a continuous direct-to-PC connection. The data logger can also be used as a standalone unit and periodically visited to upload data.



What's Included

- Data logger with serial communication port
- 12 VDC battery
- iSIC Kit
 - (2) Gland fittings
 - (5) Desiccant packs
 - RS-232 interface cable
 - (4) 56 Ω resistors

Field Installation

1. Mount the data logger to a wall, pole, or other secure location above flood stage using an A55 mounting plate.
2. Connect the A38 grounding kit wire to the copper lug on the outside bottom panel of the iSIC data logger and the other end to an appropriate earth ground.
3. Power the iSIC by connecting the 12 volt battery. Observe the green blinking LED in the hole at the end of the analog terminal strip. This only blinks for 15-20 seconds during warm-up to confirm that the data logger is powered and ready.

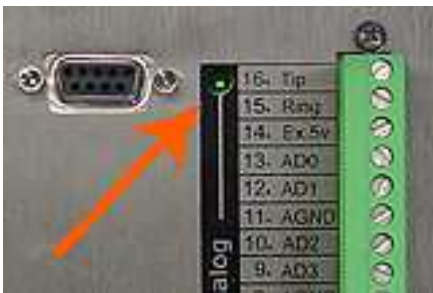


Figure 1: Green blinking LED in the hole at the end of the analog terminal strip

4. Connect sensors to the data logger. See the appropriate sensor interface manuals for wiring and other details. Bring any cables into the enclosure by removing a port plug and installing a gland fitting from the iSIC Kit.
5. To establish a physical connection for continuous communication between the iSIC and the PC, attach the RS-232 to MS3 cable purchased with the data logger from the iSIC enclosure to the PC.

Configuring with iChart

1. Install iChart software on a Windows computer.
2. Ensure power is supplied to the data logger.
3. Add the Direct Connect iSIC to an iChart project file.

To accomplish this: Follow the Setup Device Wizard to add a site name, and then select **iSIC** from the list of NexSens data loggers. Specify the correct PC Com Port and iSIC Address. Click **Test Connection** to check communication.

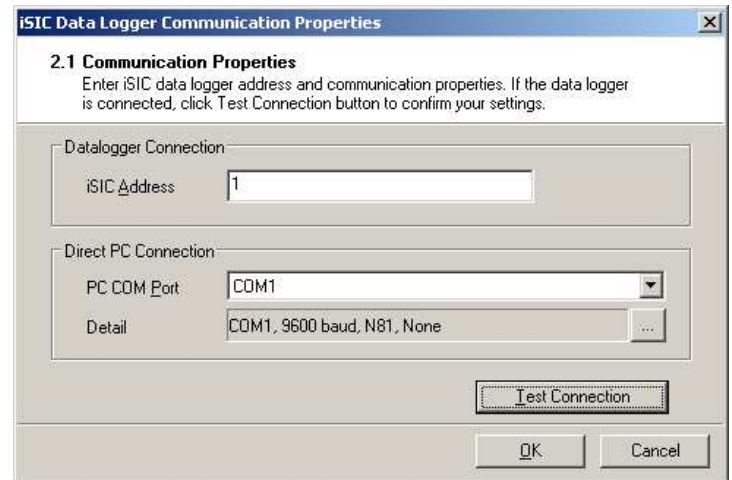


Figure 2: Step 2.1 Communication Properties dialog in the iSIC Setup Device Wizard

4. Add sensors in iChart by selecting the manufacturer and model number.
5. Continue the Setup Device Wizard and click **Program iSIC** to conclude configuration.

For more information see the online manual www.nexsens.com/pdf/nexsens_isic_manual.pdf