

Airmar PB200 Quick Start Guide

Overview

The PB200 WeatherStation® measures wind speed, and direction using ultrasonic sensors.

The sensor has built-in NMEA 0183 output that is used for interfacing with NexSens iSIC and SDL data loggers.



What's Included

- Airmar PB200
- Attached cable
- Airmar PB200 Manual and CD

Connecting with iChart

1. Unpack the Airmar PB200 and connect to port P1 of the SDL.
2. Download iChart software from

<http://nexsens.com/support/downloads.htm>

3. Install iChart software and run the program.
Note: Make sure to run iChart as administrator in Windows 7 and Vista and provide write access to Program Files folder.
4. If adding to an existing iChart project, select **Project | Setup Device Wizard**. Otherwise, select **File | New Project**.
5. Follow the wizard to add a site name, data logger, and then add the correct sensor under "Airmar" from the drop down list of sensor manufacturers. Click the "Add" button to add the sensor to the data logger.
6. On the Airmar "Smart Sensor Properties" screen, select the correct port to which the sensor is attached. Also choose the parameters to measure and select **Add**. Click **OK** to accept and add the digital sensor to the data logger.

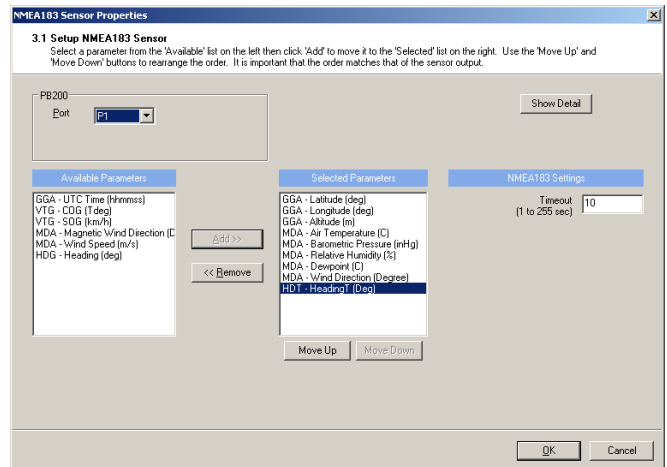


Figure 1 Smart Sensor Properties Menu

7. Follow the wizard and proceed to program the data logger to start collecting data from the Airmar PB200 Sensor.

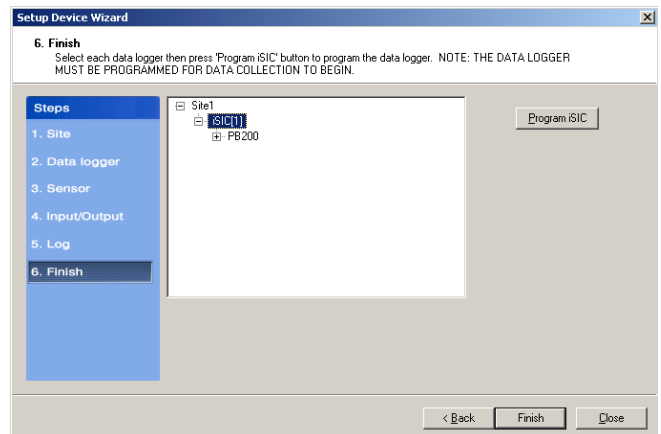


Figure 2 Programming the iSIC