

# Ponsel Digital Sensor Quick Start Guide

This guide will help you get started. Detailed instructions are available in the NexSens SDL500 manual.

## Overview

The Ponsel family of sensors uses digital physiochemical sensing technology to measure water parameters.



The available parameters include:

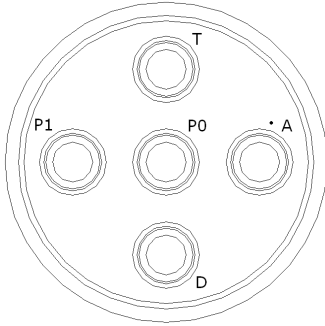
- pH/Redox/Temperature
- Conductivity/Temperature
- Optical Dissolved Oxygen/Temperature
- Turbidity/Temperature

## What's Included

- Ponsel Digital Sensor

## Getting Started

1. Unpack the Ponsel Sensor and connect to port P0, P1, or T on the bottom of the SDL.



2. Download iChart software from <http://nexsens.com/support/downloads.htm>
3. Install iChart software and run the program. **Note:** Make sure to run iChart as administrator in Windows 7 and Vista and provide write access to Program Files folder.
4. If adding to an existing iChart project, select **Project | Setup Device Wizard**. Otherwise, select **File | New Project**.
5. Follow the wizard to add a site, data logger, and then select "Ponsel" from the drop down list of sensor manufacturers and the correct sensor model from the product list. Click **Add** to add the sensor to the data logger.

6. On the Ponsel "Smart Sensor Properties" screen, the list of parameters and their order are fixed. **Note:** Do not remove or change parameter order. Change the SDI-12 Address to the correct address of the connected sensor. Click **OK**.

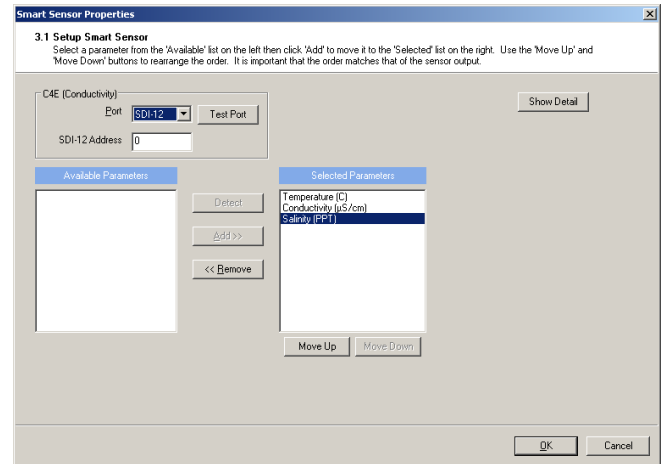


Figure 1: Selecting the correct SDI-12 address

7. Follow the wizard and at Step 6 click **Program iSIC** to program the data logger and start collecting data from the Ponsel Sensor.

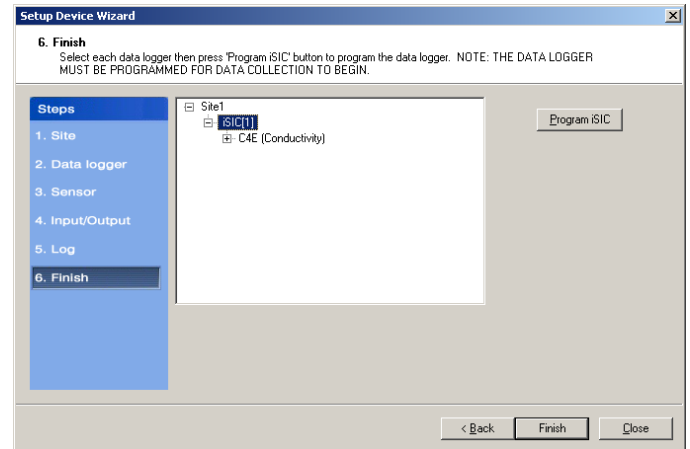


Figure 2: Programming the iSIC

8. Click **Finish** to complete and exit the Setup Device Wizard.

For more information see the online manual(s) [www.nexsens.com/knowledgebase/manual.htm](http://www.nexsens.com/knowledgebase/manual.htm)