

OTT Radar Level Sensor Quick Start Guide

Overview

The OTT Radar Level Sensor (RLS) is a low power radar level sensor used for non-contact measurement of surface water.

The sensor outputs SDI-12 and 4-20mA. Both are compatible with NexSens iSIC and SDL data loggers.



What's Included/Needed

- OTT RLS with attached cable

Connecting with iChart

1. Unpack the RLS and connect to port P0 of the SDL.
2. Download iChart software from:
<http://nexsens.com/support/downloads.htm>
3. Install iChart software and run the program.

Note: Make sure to run iChart as administrator in Windows 7 and Vista and provide write access to Program Files folder.

4. If adding to an existing iChart project, select **Project | Setup Device Wizard**. Otherwise, select **File | New Project**.
5. Follow the wizard to add the site name, data logger, and then add the correct sensor under "OTT" from the drop down list of sensor manufacturers. Click the **Add** button to add the sensor to the data logger.

6. On the RLS "Smart Sensor Properties" screen, change the SDI-12 Address to the correct address ("0" by default). Click **Detect** to add the parameters. Then, click **OK** to accept and add the digital sensor to the data logger.

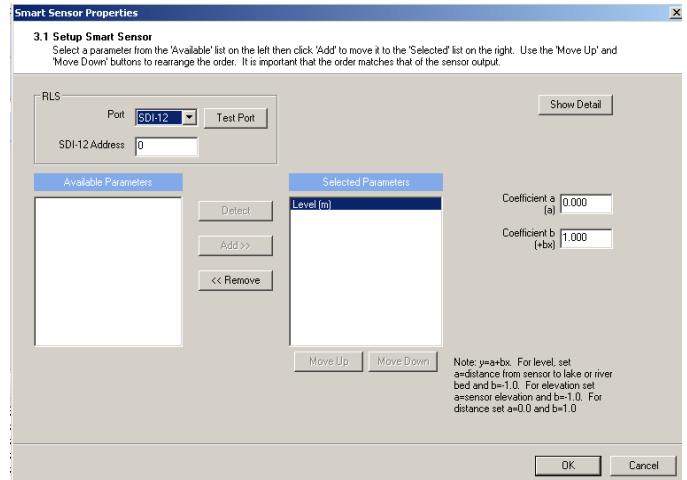


Figure 1: Smart Sensor Properties (Step 6)

7. Follow the wizard and proceed to program the data logger to start collecting data from the OTT RLS.

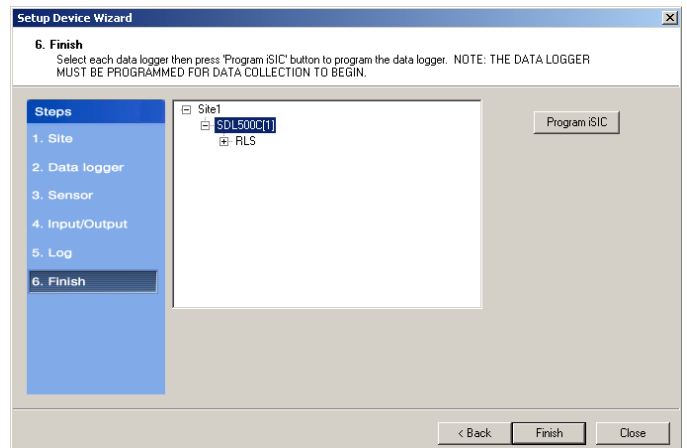


Figure 2: Program the iSIC (Step 7)