

In-Situ RDO Pro Quick Start Guide

This guide will help you get started. Detailed instructions are available in the NexSens SDL500 manual.

Overview

The RDO Pro is an optical dissolved oxygen sensor for long-term environmental monitoring with built-in Modbus RS-485 and SDI-12 outputs.



What's Included

- RDO Pro Sensor with attached cable

Connecting with iChart

1. Unpack the RDO Pro Sensor and connect to port P0 of the SDL.
2. Download iChart software from <http://nexsens.com/support/downloads.htm>
3. Install iChart software and run the program.
Note: Make sure to run iChart as administrator in Windows 7 and Vista and provide write access to Program Files folder.
4. If adding to an existing iChart project, select **Project | Setup Device Wizard**. Otherwise, select **File | New Project**.
5. Follow the wizard to add a site name, data logger, and then choose "In-Situ" from the drop down list of manufacturers and "RDO Pro" from the product list. Click **Add**.
6. On the RDO Pro "Smart Sensor Properties" screen, the list of parameters and their order are fixed. **Note:** Do not remove or change parameter order.
7. Enter the SDI-12 address of the connected sensor and click **Test Port**. If the test fails, check that the sensor cable is firmly connected and that the correct SDI-12 address is entered. Click **OK**.

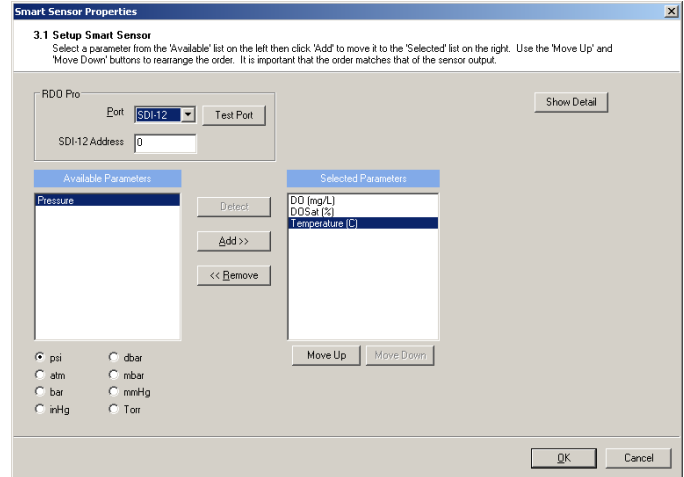


Figure 1: Testing the sensor port

8. Follow the wizard to step 6. Select the data logger, and then click **Program iSIC** to program the data logger and start collecting data from the RDO Pro Sensor.

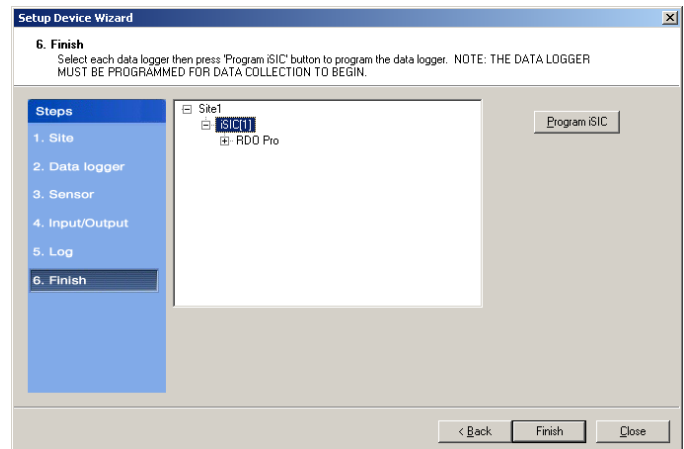


Figure 2: Programming the iSIC

Calibrating using RDO PRO Communication Device Kit

If attempting to connect to the computer directly for calibration using the In-Situ RDO Pro Communication Device Kit and a UW-R to Flying Lead Cable, note that the blue wire must go where green is labeled and the green must go where blue is labeled. After it's connected follow the manufacturer's instructions for calibration.

For more information see the online manuals <http://nexsens.com/knowledgebase/manual.htm>



Revision Date: September 29, 2011

1415 Research Park Drive
Beavercreek, Ohio 45432
937-426-2703
www.NexSens.com