

FTS DTS-12 Quick Start Guide

Overview

The DTS-12 turbidity sensor is a low maintenance, highly accurate sensor produced by FTS. It measures turbidity over the full range of 0-1,600NTU.



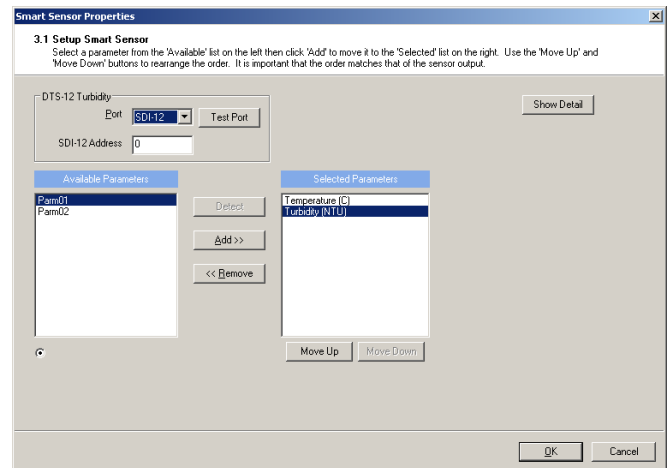
What's Included/Needed

- DTS-12 Sensor
- Extra Wiping Blade
- Operating manual

Getting Started

1. Unpack the Ponsel Sensor and connect to port P1 of the SDL.
2. Download iChart software from <http://nexsens.com/support/downloads.htm>
3. Install iChart software and run the program. **Note:** Make sure to run iChart as administrator in Windows 7 and Vista and provide write access to Program Files folder.
4. If adding to an existing iChart project, select Project | Setup Device Wizard. Otherwise, select File | New Project.
5. Follow the wizard to add a site name, data logger, and then add the correct sensor under "FTS" from the drop down list of sensor manufacturers. Click the "Add" button to add the sensor to the data logger.
6. On the FTS "Smart Sensor Properties" screen, the list of parameters and their order are **fixed. Do not remove or change parameter order.** Ensure the SDI-12 Address is set to the correct address. Click OK to accept and add the digital sensor to the data logger.

Smart Sensor Properties Screenshot



7. Follow the wizard and proceed to program the data logger to start collecting data from the Ponsel Sensor.

Program the iSIC Screenshot

