

Aanderaa Oxygen Optode 4175 Quick Start

Overview

The 4175 is an optical O₂ concentration sensor. It is designed for extended use and needs recalibration yearly. This low maintenance sensor also incorporates a temperature sensor.



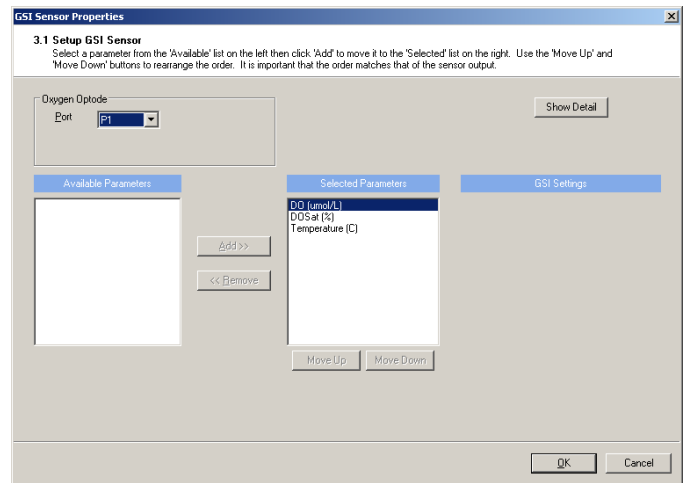
What's Included/Needed

- Oxygen Optode 4175

Getting Started

1. Unpack the Aanderaa Sensor and connect to port P1 or P0 of the SDL.
2. Download iChart software from <http://nexsens.com/support/downloads.htm>
3. Install iChart software and run the program.
Note: Make sure to run iChart as administrator in Windows 7 and Vista and provide write access to Program Files folder.
4. If adding to an existing iChart project, select Project | Setup Device Wizard. Otherwise, select File | New Project.
5. Follow the wizard to add a site name, data logger, and then add the correct sensor under "Aanderaa" from the drop down list of sensor manufacturers. Click the "Add" button to add the sensor to the data logger.
6. On the Aanderaa "Smart Sensor Properties" screen, the list of parameters and their order are **fixed**. **Do not remove or change parameter order**. Click OK to accept and add the digital sensor to the data logger.

Smart Sensor Properties Screenshot



7. Follow the wizard and proceed to program the data logger to start collecting data from the Ponsel Sensor.

Program the iSIC Screenshot

