

4100-iSIC Quick Start Guide

This guide will help you get started. Detailed instructions are available in the NexSens 4100-iSIC manual.

Overview

The NexSens 4100-iSIC (Intelligent Sensor Interface and Control) uses an integrated spread spectrum radio modem for license-free remote data collection from up to a five mile line of sight from the radio base station.



What's Included

- Data logger with spread spectrum radio modem
- 12 VDC battery
- iSIC Kit
 - (2) Gland fittings
 - (5) Desiccant packs
 - RS-232 interface cable
 - (4) 56 Ω resistors

Field Installation

1. Mount the data logger to a wall, pole, or other secure location above flood stage using the A55 Mounting Plate.
2. Connect the A38 grounding kit wire to the copper lug on the bottom of the 4100-iSIC data logger and the other end to an appropriate earth ground.
3. Mount the desired radio antenna in a location that will maximize signal strength. Attach an RF cable from the antenna to the RF port on the 4100-iSIC.
4. Power the iSIC by connecting the 12 volt battery. Observe the green blinking LED in the hole at the end of the analog terminal strip. This only blinks for 15-20 seconds during warm-up to confirm that the data logger is powered and ready.
5. Connect sensors to the data logger. See the appropriate sensor interface manuals for wiring and other details. Bring any cables into the enclosure by removing a port plug and installing a gland fitting from the iSIC Kit.
6. Connect a 4100-Base, 4200-iSIC, or a 3200-iSIC to the monitoring PC and power the

device. A base station must be used to connect to the 4100-iSIC.

Configuring with iChart

1. Install iChart software on a Windows computer.
2. Ensure power is supplied to the data logger and the base radio device.
3. Add the 4100-iSIC to an iChart project file.

To accomplish this: Follow the Setup Device Wizard to add a site name, and then select **4100-iSIC** from the list of NexSens data loggers. Enter the correct Communication Properties and click **Test Connection** to check communication.

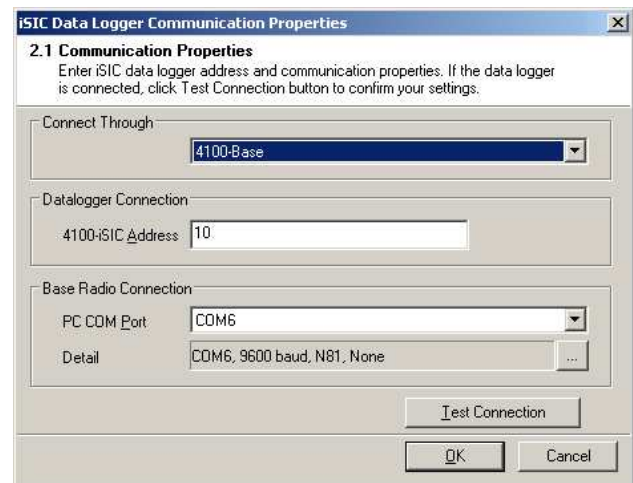


Figure 1: Step 2.1 Communication Properties dialog in the iSIC Setup Device Wizard

4. Add sensors in iChart by selecting the manufacturer and model number.
5. Continue the Setup Device Wizard and click **Program iSIC** to conclude configuration.

For more information see the online manual
www.nexsens.com/pdf/nexsens_4100-isic_manual.pdf